

EZ-View EyePiece Imager for Microscope

#EZ5M(USB2.0) 5M pixels

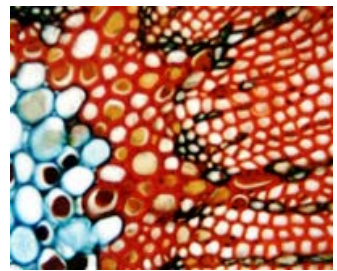
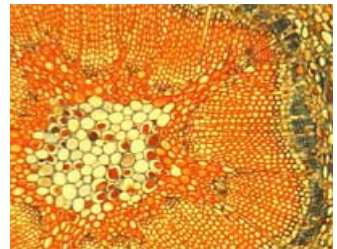
EZ5M (USB2.0) is a digital camera professionally designed for microscope. It works perfectly with any kind of optical microscopes, as biological microscope, metallurgical microscope and stereomicroscope. The images of the observed specimen is genuinely displayed on computer screen. The powerful advanced software ScopePhoto included with the camera ensures simple and convenient operation (measurement and image processing) on the images captured.

EZ5M (USB2.0) employs newly designed optical system of fully coated, based on MTF (modulation Transfer Function) analysis, for improved image flatness and contrast. The images are brighter and distinct even at the periphery of the field of view. It offers excellent performance when combined with plan-achromatic objective. Especially, it is designed for matching microscope features, such as the field of view of eyepiece WF10X-18mm and the objective par-focalization.

EZ5M (USB2.0) has a wide field for matching microscope field of view 18mm.

EZ5M (USB2.0) is to be inserted directly into the ocular-tube or the photo-tube. With the adaptors included, it is also workable on a stereomicroscope.

EZ5M (USB2.0) makes the image with excellent true color. If the microscope adapted with **EZ5M (USB2.0)** is earthed definitely, the metal body of the camera ensures wonderful anti-interference.



Specification

Image Output	USB 2.0
Sensor	5.17M HPCD core
Max Resolution	2592×1944
Frame Rate	2fps at 2592×1944
Data Format	RGB 24
Color	Max 1.64 million 24Bit Color
Preview Model	2592×1944 / 2048×1536 / 1280×960 / 864×600
Range of wave length	400nm~1000nm
Sensitivity	0.8V/lux-sec@550nm
Dynamic Range	>62dB
White Balance	Automatic or Manu
Power supply	PC USB 2.0 Port
Programmable controls	Color-Brightness / Gamma Correction / Exposure-Sharpness Adjustment / Auto, 50/60 Hz light auto detection
Operating System	Windows2000-XP (Professional-SP4) -XP (Professional-SP2) are installed when shipping. No working if specifications up to reach of above after shipment.
Basic PC*	CPU equivalent to Inter Pentium4 2.4GHz or more
	512MB RAM or more
	1P'ce Hi-speed USB 2.0Port
	17" Monitor or 19" (Recommended)
Accessories	Two adaptors (Dia.30mm, Dia.30.5mm, one each) for stereo microscope
Camera size	Blackened metal body of cylinder shape Dia.60 mm

Image software

ScopePhoto Ver 3.0